

Active line
LED



EATON

Powering Business Worldwide

Multicolour Light GH2 for wall mounting

Optical signalling devices
in LED-technology

- ▶ 5 different signal colours
in just one lamp
- ▶ 3 signalling modes
(flash, blinking, permanent)
- ▶ Space-saving installation
- ▶ Extreme lifetime thanks to
LED technology
- ▶ Low power consumption



LED

Application

The ActiveLine multicolour light for wall mounting is an optical signalling device for universal use. The possible signalling colours red, yellow, green, blue and white serve many different signalling functions. The different signalling colours are generated in one single light element. Every colour allows presetting one of the operating modes: continuous light, signalling light or flash light. The light is generated by LED's.

Construction

The plastic housing is made of impact resistant ABS plastic and the cap consists of impact resistant polycarbonate. For the insertion of the connecting cable the device is equipped with a self-sealing grommet M16x1,5 for cable diameters of 6 to 8 mm. The construction of the fixing plate allows both the exposed and the flush mounting of the cable.

**Burglar alarm
system in an
office building.**

Green shows alarm
switched „off“,
red shows alarm „on“.



Technical specifications

Supply voltage 24 VDC, 230 VAC
(Voltage between colour connection and earth connection)

Tolerance of the supply voltage $\pm 10\%$
Current consumption $< 180 \text{ mA}$
Power consumption $< 4.5 \text{ W}$

Operating modes
Continuous light
Flash light 50 ms on 450 ms off
Signalling light 200 ms on 300 ms off

Housing thermoplastic
Cap Polycarbonate
Class of protection III
Degree of protection IP54 acc. to EN60529

Operation temperature $-25^\circ\text{C} \dots +60^\circ\text{C}$
Storage and transport temperature $-40^\circ\text{C} \dots +70^\circ\text{C}$
Connection terminals 2.5 mm^2

Weight 0.3 kg

Versions with AC voltage
Test signal:

A connection line and terminal test can be conducted with the signal at terminal "LM". The voltage between the terminals "LM" and "N" is measured.
Attention! Don't connect operating voltage to the "LM" terminal.

Connection line or terminal not in order:

measured voltage 0 V or operating AC voltage without DC component

Connection line or terminal in order:

measured voltage operating AC voltage ($\pm 20\%$) with DC component

Versions with DC voltage

Operating voltage 24 VDC

Current consumption
colour (white) on / sounder off $< 135 \text{ mA}$
colour off / sounder on $< 80 \text{ mA}$
colour (white) on / sounder on $< 190 \text{ mA}$

Power consumption at rated operating voltage $< 4.6 \text{ W}$

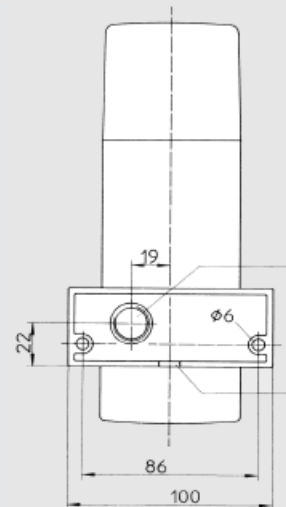
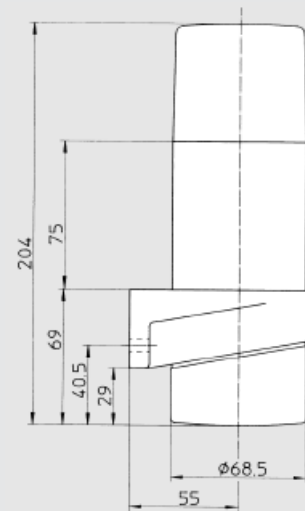
Insulation class III

Test signal: A negative voltage ($< 24\text{V}$) relative to terminal "GND" can be connected to terminal "LM".

Connected line in order the measured current correlates to a load of $10 \text{ k}\Omega$

Connected line not in order

disconnection no current
short circuit the measured current correlates to a load of less than $2 \text{ k}\Omega$



self-sealing grommet
M16 x 1.5 for cable diameters of 6–8 mm
rated breaking point for
cable diameters up to 10 mm

Terminal occupation

Switch (as-shipped state)	Signalling tone	Colours
1	1	wh
2	2	bl
3	3	rd
4	4	ye
5	5	gn
6	6	
7	7	
8	8	
9	9	
10	10	

wh = white bl = blue rd = red ye = yellow gn = green

Order information

Type	Name	Rated Voltage U_e	Article no.
Activeline	Multicolour Light GH2	24 VDC $\pm 10\%$	226 313 02
Activeline	Multicolour Light GH2	230 VAC $\pm 10\%$	226 307 02

Subject to change without notice · Printout 08/15