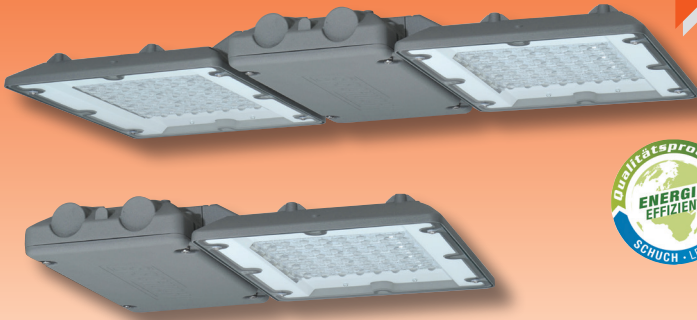


NEW

LED High Bay Light Fittings for Ex-Zone 2/22

Series nD8301/nD8302...



Application:

Hazardous locations, of Zones 2 (gas) and 22 (dust), in assembling- and production halls, warehouses, in industrial sectors, workshops, chemical factories etc.

Optics: Without optic wide beam, with optic wide (B) or narrow-wide beam (TB).

Connection: 5 poles up to 2,5mm².

Entries: 1 gland M25 x 1,5.

Mounting material: See accessories/spare parts.

General Purpose: Beaming downwards (0°).

Design:

Two versions are available: 1 or 2 LED wings.

Housing: Diecast aluminum, DB 702N

(mica-iron paint). LED-housing with LED modules, optics behind tempered safety glass

(IK08). ECG housing with integrated electronic control gear, prewired on terminals.

Technical Data:

LED-module: 4,000K, CRI > 80, life time L₇₀ 100,000h or at ambient temperature > 50°C L₇₀ > 90,000h (see notes).

ECG: 220 - 240V, 50-60Hz. Surge voltage resistance 4kV, overvoltage protection, excess temperature protection, overload and short circuit protection.

Note: Due to the inrush current of the electronic ballasts, the maximum permissible number of light fittings per circuit breaker is limited. (see technical supplement)

DALI-interface for dim light operation

Ambient temperature: -20°C up to +40°C / +50°C / +60°C (see article tables)

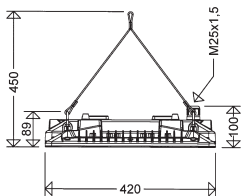
Options:

- narrow beam version (T) the whole life cycle
- Version with narrow oval optic (TO) for illumination of aisles in rack areas
- light output reduction (LR) per 230V control line
- uniform luminous flux option (CL) to keep the light output on same level for
- version with additional threads for wall mounting by means of swivel arm brackets (swivel range 0° - 45°)
- for connection to group or central battery systems (ZB)
- cable looping on one side

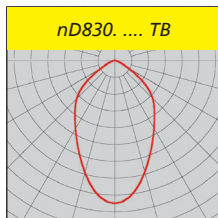
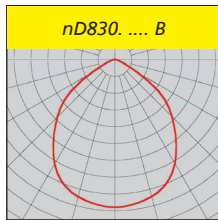
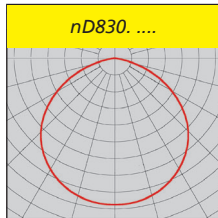
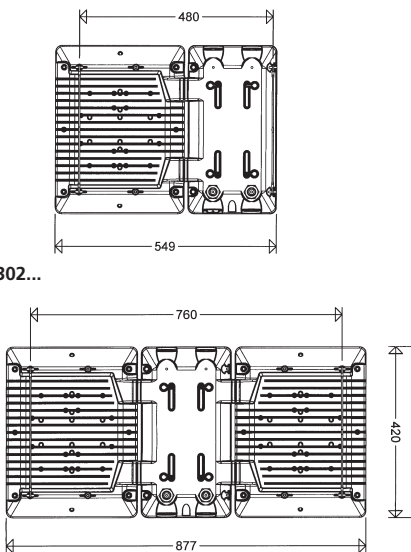
SCHUCH Quality - your advantage:

- high efficient by use of top-quality mid-power LEDs
- extremely high lifetime even at the maximum permissible ambient temperature
- **optimized thermo management** due to direct mounting of the LED modules to the housing and separate housings for ECG- and LED-modules, huge heat sink with excellent heat dissipation
- DALI interface (standard) for dimmed operation
- colour rendering index CRI > 80
- **uniform illumination** due to the „Multi-Layer Technology“ i.e. every individual LED illuminates the whole surface, the light curves of the individual LED are overlapping. No dark zones if any single LED would fail. The uniformity of the illumination is kept.
- future proof by using standardized LED-modules (Zhaga)

nD8301...



nD8302...

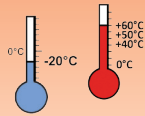


Notes:

Properties, limitations and details for controlling LED-light fittings: See „Technical Supplement“.

All technical data is relevant at the time of print. Actual technical data can be found in the internet under www.schuch.de.

Article no.	Type	Power consumption [W] *	Luminous flux [lm] *	Luminous efficacy [lm/W] **	T max [°C]	Wide beam	Narrow-wide beam	Energy efficiency class	Substitute for **	Weight [kg] (without packing material)
-------------	------	-------------------------	----------------------	-----------------------------	------------	-----------	------------------	-------------------------	-------------------	--



Ignition protection: nR
 Marking:
 II 3 G Ex nR IIC T4 Gc (Zone 2)
 II 3 D Ex tc IIIC T100°C Dc (Zone 22)

Rated voltage: 220V - 240V, 50-60Hz
 Permissible ambient temperature:
 -20°C up to +40°C / +50°C / +60°C

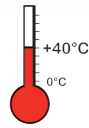
nD8301/nD8302...



... for ambient temperatures up to +40°C

1 LED wing

83010 0001	nD8301 L110	67	10.800	161	40	•	A++	HME 250	8,9
83010 0002	nD8301 L160	96	15.000	156	40	•	A++	HIT 250/HME 400	8,9
83010 0003	nD8301 L210	135	20.200	150	40	•	A++	HIE 400	8,9
83010 0004	nD8301 L110B	67	10.800	161	40	•	A++	HME 250	9,2
83010 0005	nD8301 L160B	96	15.000	156	40	•	A++	HIT 250/HME 400	9,2
83010 0006	nD8301 L210B	135	20.200	150	40	•	A++	HIE 400	9,2
83010 0007	nD8301 L110TB	67	10.800	161	40	•	A++	HME 250	9,2
83010 0008	nD8301 L160TB	96	15.000	156	40	•	A++	HIT 250/HME 400	9,2
83010 0009	nD8301 L210TB	135	20.200	150	40	•	A++	HIE 400	9,2



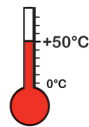
2 LED wing

83020 0002	nD8302 L320	192	30.000	156	40	•	A++	HIT 400	14,5
83020 0003	nD8302 L420	270	40.400	150	40	•	A++	2 x HIE 400	14,5
83020 0005	nD8302 L320B	192	30.000	156	40	•	A++	HIT 400	14,6
83020 0006	nD8302 L420B	270	40.400	150	40	•	A++	2 x HIE 400	14,6
83020 0008	nD8302 L320TB	192	30.000	156	40	•	A++	HIT 400	14,6
83020 0009	nD8302 L420TB	270	40.400	150	40	•	A++	2 x HIE 400	14,6

... for ambient temperatures up to +50°C

1 LED wings

83010 0101	nD8301 L110 H50	67	10.800	161	50	•	A++	HME 250	8,9
83010 0102	nD8301 L160 H50	96	15.000	156	50	•	A++	HIT 250/HME 400	8,9
83010 0104	nD8301 L110B H50	67	10.800	161	50	•	A++	HME 250	9,2
83010 0105	nD8301 L160B H50	96	15.000	156	50	•	A++	HIT 250/HME 400	9,2
83010 0107	nD8301 L110TB H50	67	10.800	161	50	•	A++	HME 250	9,2
83010 0108	nD8301 L160TB H50	96	15.000	156	50	•	A++	HIT 250/HME 400	9,2



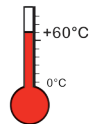
2 LED wings

83020 0101	nD8302 L220 H50	134	21.600	161	50	•	A++	HIE 400	14,5
83020 0102	nD8302 L320 H50	192	30.000	156	50	•	A++	HIT 400	14,5
83020 0104	nD8302 L220B H50	134	21.600	161	50	•	A++	HIE 400	14,6
83020 0105	nD8302 L320B H50	192	30.000	156	50	•	A++	HIT 400	14,6
83020 0107	nD8302 L220TB H50	134	21.600	161	50	•	A++	HIE 400	14,6
83020 0108	nD8302 L320TB H50	192	30.000	156	50	•	A++	HIT 400	14,6

... for ambient temperatures up to +60°C

1 LED wings

83010 0201	nD8301 L110 H60	67	10.800	161	60	•	A++	HME 250	8,9
83010 0202	nD8301 L160 H60	96	15.000	156	60	•	A++	HIT 250/HME 400	8,9
83010 0204	nD8301 L110B H60	67	10.800	161	60	•	A++	HME 250	9,2
83010 0207	nD8301 L110TB H60	67	10.800	161	60	•	A++	HME 250	9,2



2 LED wings

83020 0201	nD8302 L220 H60	134	21.600	161	60	•	A++	HIE 400	14,5
83020 0202	nD8302 L320 H60	192	30.000	156	60	•	A++	HIT 400	14,5
83020 0204	nD8302 L220B H60	134	21.600	161	60	•	A++	HIE 400	14,6
83020 0207	nD8302 L220TB H60	134	21.600	161	60	•	A++	HIE 400	14,6

* see notes ** The given information is for rough orientation only. In each individual case a lighting calculation is necessary.

Accessories / Spare Parts

Article no.	Type	
90117 9006	2537 G	plastic gland M25x1,5 with nut
90118 9006	2538 G	plastic plug M25x1,5 with nut
33001 9004	3301/3302 Y P	1 pair of Y-ropes, (2-point-mounting)
33001 9002	3301/3302 D	1 pair of angle brackets for direct ceiling mounting
33001 9003	3301 W	1 angle bracket, adjustable, for wall mounting series nD8301... ¹⁾
33001 9007	3302 W	1 angle bracket, adjustable, for wall mounting series nD8302... ¹⁾

1) For mounting these brackets additional mounting holes are required on the luminaire. Please indicate way of mounting when ordering the luminaire.