



## TRIANO L LED High Bay Fitting Series 3403...

### Applications:

Production areas and warehouses, maintenance and assembly shops, cool storage facilities, walkways in rack areas, hardware stores etc.

### Design:

**LED-segments:** Robust four-part cast aluminium housing with cooling fins, LED-modules and flat safety glasses (IK09), versions (B, TB or T) with PC cover with integrated optics.

**ECG-housing:** Extruded aluminium with cooling fins. All case parts powder coated in DB 702 (mica-iron paint, grey).

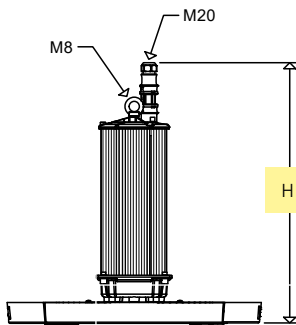
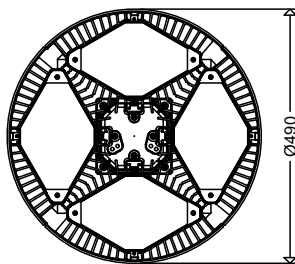
**Light distribution:** Without optics wide beam, with optics wide (B) narrow-wide (TB) or narrow-beam (T).

**Connection:** Preinstalled 3-pole (DIMD 5-pole) quick-connector (FastConnect), plug mounted to the housing, socket included.

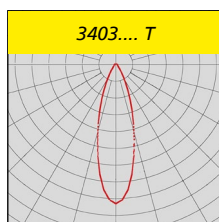
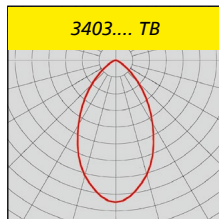
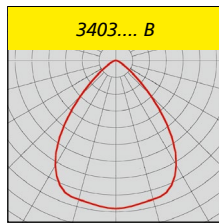
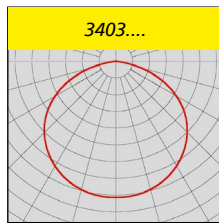
**Mounting:** 1-point suspension, eyelet included.

Delivery status:

2 parts: LED-segments and ECG-housing



Series	H [mm]
3403 ...	510
3403 L380.. DIMD	590



### Technical Data:

**LED module:** 5,000K or 4,000K, CRI > 80, service life  $L_{80}$  > 100,000h at 25°C ambient temperature, service life  $L_{80}$  > 80,000h at max. ambient temperature

**ECG:** 220-240V, 50/60Hz, Surge voltage resistance 4kV, overload and short circuit protection.

### Light control:

On request, the luminaires are also available with the following configurations:

**Output reduction with control phase (LR):** via 230V control input. Control phase (LST) required. Switching via control phase (LST = 230V: 100%; LST = 0V: 50%). Further dimming levels possible.

**Digital dimming with DALI interface (DIMD)** compatible with LIMAS Line and LIMAS Air Light Management System.

**Constant luminous flux function (CL):** Luminous flux is kept on a constant level over the entire service life of the LED-modules.

**Ambient temperature:** -25°C up to see article tables

### Options:

- for connection to group or central battery systems (ZB) or emergency mains respectively
- PC cover for application in food industry areas (IFS Food)

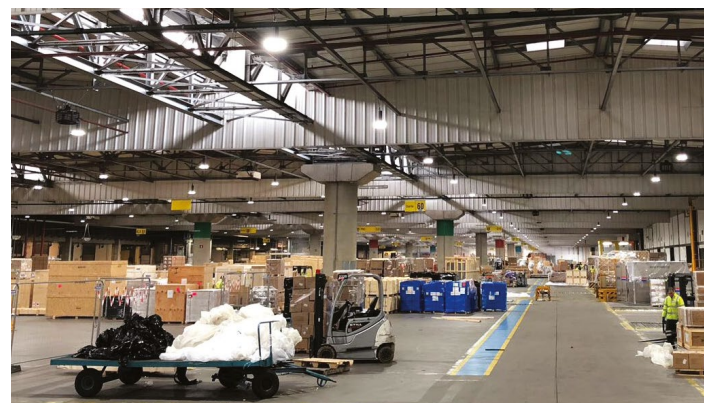
– silicone free

– for high ambient temperatures to +70°C (H70)



### Product highlights:

- fast mounting and commissioning due to 1-point suspension and FastConnect quick-connector
- high quality ECG with overload and short circuit protection
- optimized thermal management due to segmentation of the LED modules and direct mounting to the housing. Huge heat sink, excellent heat dissipation, excellent convection
- high system service life of up to 100,000h (25°C), >70,000h at maximum ambient temperature
- colour reproduction  $R_a > 80$ , according to the workplace guide lines suitable for nearly all plant locations
- ▽-symbol, suitable for rooms with increased fire risk
- uniform illumination due to the „Multi-Layer Technology“ i.e. every individual LED illuminates the whole surface, the light curves of the individual LEDs are overlapping.



! Properties, limitations and details for controlling LED-light fittings:

■ See "Technical Supplement"

All data are correct at the time of printing. Actual technical data can be found under [www.schuch.de](http://www.schuch.de).

Versions with PC-Optics are suitable for use in IFS-applications!

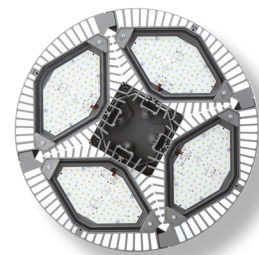
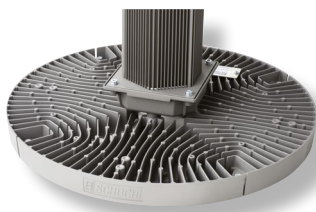
Article no.	Type	dimmable	Wide beam	Narrow wide beam	Narrow beam	Tmax [°C]	Weight [kg] (without packing material)	Connected load [W]	Luminous flux [lm]	Light output [lm/W]	Substitute for *
-------------	------	----------	-----------	------------------	-------------	-----------	--	--------------------	--------------------	---------------------	------------------



### 3403...

34030 0001	<b>3403 L260</b>		•			60	8,9	166	27.000	163	HIE 400 (HS-VG), HIT 400
34030 0003	<b>3403 L260B</b>		•			60	8,9				
34030 0004	<b>3403 L260TB</b>			•		60	8,9				
34030 0008	<b>3403 L260T</b>				•	60	8,9				
34030 0200	<b>3403 L260 DIMD</b>	•	•			60	8,9				
34030 0202	<b>3403 L260B DIMD</b>	•	•			60	8,9				
34030 0203	<b>3403 L260TB DIMD</b>	•		•		60	8,9				
34030 0206	<b>3403 L260T DIMD</b>	•			•	60	8,9				
34030 0002	<b>3403 L380</b>		•			50	8,9	256	39.500	154	HME 700, HPI 400
34030 0005	<b>3403 L380B</b>		•			50	8,9				
34030 0006	<b>3403 L380TB</b>			•		50	8,9				
34030 0009	<b>3403 L380T</b>				•	50	8,9				
34030 0201	<b>3403 L380 DIMD</b>	•	•			50	9,7				
34030 0204	<b>3403 L380B DIMD</b>	•	•			50	9,7				
34030 0205	<b>3403 L380TB DIMD</b>	•		•		50	9,7				
34030 0207	<b>3403 L380T DIMD</b>	•			•	50	9,7				
34030 0031	<b>3403 L260 840</b>		•			60	8,9	166	27.000	163	HIE 400 (HS-VG), HIT 400
34030 0020	<b>3403 L260B 840</b>		•			60	8,9				
34030 0011	<b>3403 L260TB 840</b>			•		60	8,9				
34030 0022	<b>3403 L260T 840</b>				•	60	8,9				
34030 0209	<b>3403 L260 DIMD 840</b>	•	•			60	8,9				
34030 0215	<b>3403 L260B DIMD 840</b>	•	•			60	8,9				
34030 0216	<b>3403 L260TB DIMD 840</b>	•		•		60	8,9				
34030 0217	<b>3403 L260T DIMD 840</b>	•			•	60	8,9				
34030 0032	<b>3403 L380 840</b>		•			50	8,9	256	39.500	154	HME 700, HPI 400
34030 0017	<b>3403 L380B 840</b>		•			50	8,9				
34030 0024	<b>3403 L380TB 840</b>			•		50	8,9				
34030 0033	<b>3403 L380T 840</b>				•	50	8,9				
34030 0218	<b>3403 L380 DIMD 840</b>	•	•			50	9,7				
34030 0208	<b>3403 L380B DIMD 840</b>	•	•			50	9,7				
34030 0219	<b>3403 L380TB DIMD 840</b>	•		•		50	9,7				
34030 0220	<b>3403 L380T DIMD 840</b>	•			•	50	9,7				

\* The given information is for rough orientation only. In each individual case a lighting calculation is necessary. (VG = ballast)



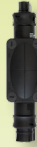
#### Excellent thermal management by unique design!

Each LED-Segment is completely surrounded by a highly efficient cooling fin structure. Such design creates a permanent air flow within the LED-Segments. It cools perfectly and avoids dust deposit that could prevent heat dissipation.

**Outcome: Operation in high ambient temperature environment plus long life cycle.**



LIMAS Air FM



LIMAS Air FM MK



**NEW**

## LIMAS Air - Smart lighting control

**Applications:**

Areas where luminaires are to be intelligently controlled to lower operating costs and reduce CO<sub>2</sub> emissions.

**Design:**

CASAMBI® radio module with FastConnect quick-connector for easy plugging onto DIMD luminaires.

Article No.	Type	
90547 9001	<b>LIMAS Air FM</b>	CASAMBI® radio module with FastConnect quick-connector for controlling DIMD luminaires
90547 9002	<b>LIMAS Air FM MK</b>	CASAMBI® radio module with FastConnect quick-connector and 1m cable

Explanations of the Light Management System LIMAS Air and the system components (sensors, switches, push-buttons, etc.) can be found at the beginning of the chapter „High Bay Fittings“.

## Accessories / Spare Parts

Article no.	Type	
34011 9001	<b>3401/010</b>	spare safety glass, for 1 LED-module
34011 9003	<b>3401/011 PRA</b>	PMMA spare cover , prismatic structure for 1 LED-module
34011 9002	<b>3401/010 IFS</b>	PC cover without optics for 1 LED-module for versions IFS
34011 9004	<b>3401/012 B</b>	PC spare cover with wide beam optik for 1 LED-module, version B
34011 9005	<b>3401/012 TB</b>	PC spare cover with narrow-wide beam optics for 1 LED-module, version TB
34011 9006	<b>3401/012 T</b>	PC spare cover with narrow beam optics for 1 LED-module, version T