

PEI TEL

# PTCarPhone 6

The First LTE Car Phone  
with Telematics Features for  
Fixed Installation



[www.malux.fi](http://www.malux.fi)

# PTCarPhone



- ✓ LTE / 3G / 4G Stand-alone system with SIM card tray
- ✓ Reachability does not depend on the phones battery
- ✓ Very safe from theft, loss or defect
- ✓ Removable handset for discreet phone calls
- ✓ WiFi hotspot – Share your mobile internet connection
- ✓ Integrated GPS module; Position location, Route recording, Geofencing
- ✓ Compatible with BRIDGE - the new web platform
- ✓ Extensive range of accessories
- ✓ 6 digital I/O ports Enables several individual functions
- ✓ Excellent voice and audio quality and Perfect reception due to connections for external antennas
- ✓ Individual adjustable restrictions; Incoming and outgoing calls, SMS messages, Phone number restriction (FDN function)



# LTE / VoLTE / WiFi Hotspot



## The First LTE Car Phone with Telematics Features for Fixed Installation

- LTE with multi-antenna technology
- Even better reception than the predecessors
- Two SMA connections for "LTE MIMO antenna"
- VoLTE support → significantly better voice and audio quality, both in hands-free mode and in private mode with the handset



## WiFi Hotspot - Share your Mobile Internet Connection via WiFi

- Mobile wireless internet access
- Perfect for mobile (e.g. laptop, tablet) or stationary devices (e.g. vehicle computers)
- Up to 10 devices at the same time
- Various wireless security settings (as secure as your home network)

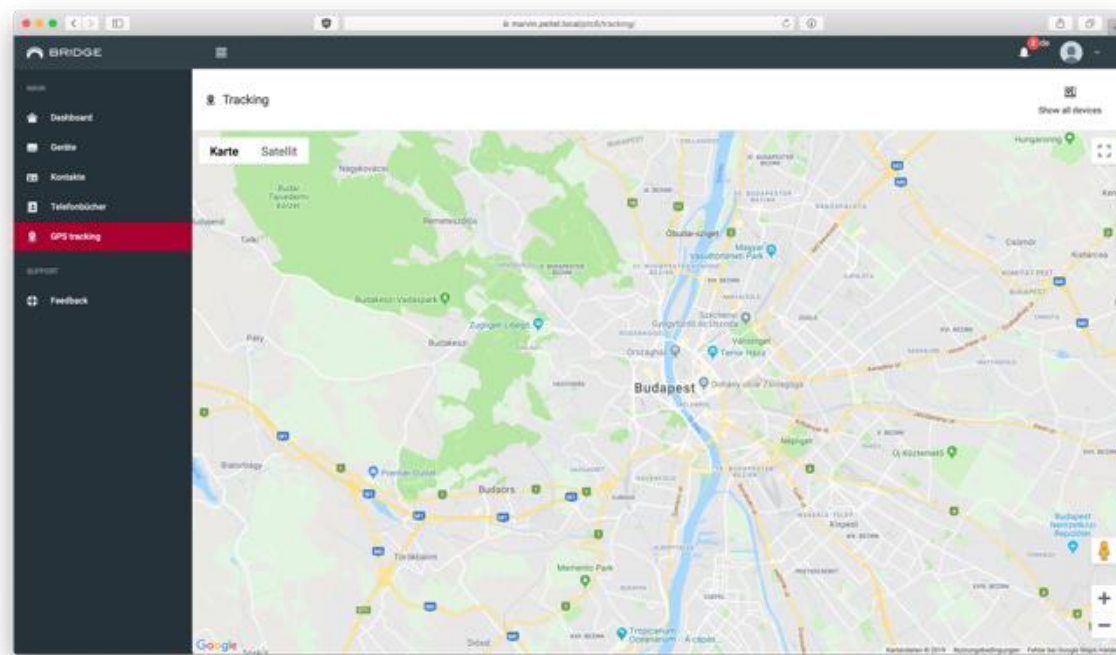
# GPS Tracking and BRIDGE Web Platform



## Integrated GPS Module

- Standard equipment of the PTCarPhone 6
- Enables various telematics functions, e.g.:
  - Position location
  - Route recording
  - Geofencing
  - and much more

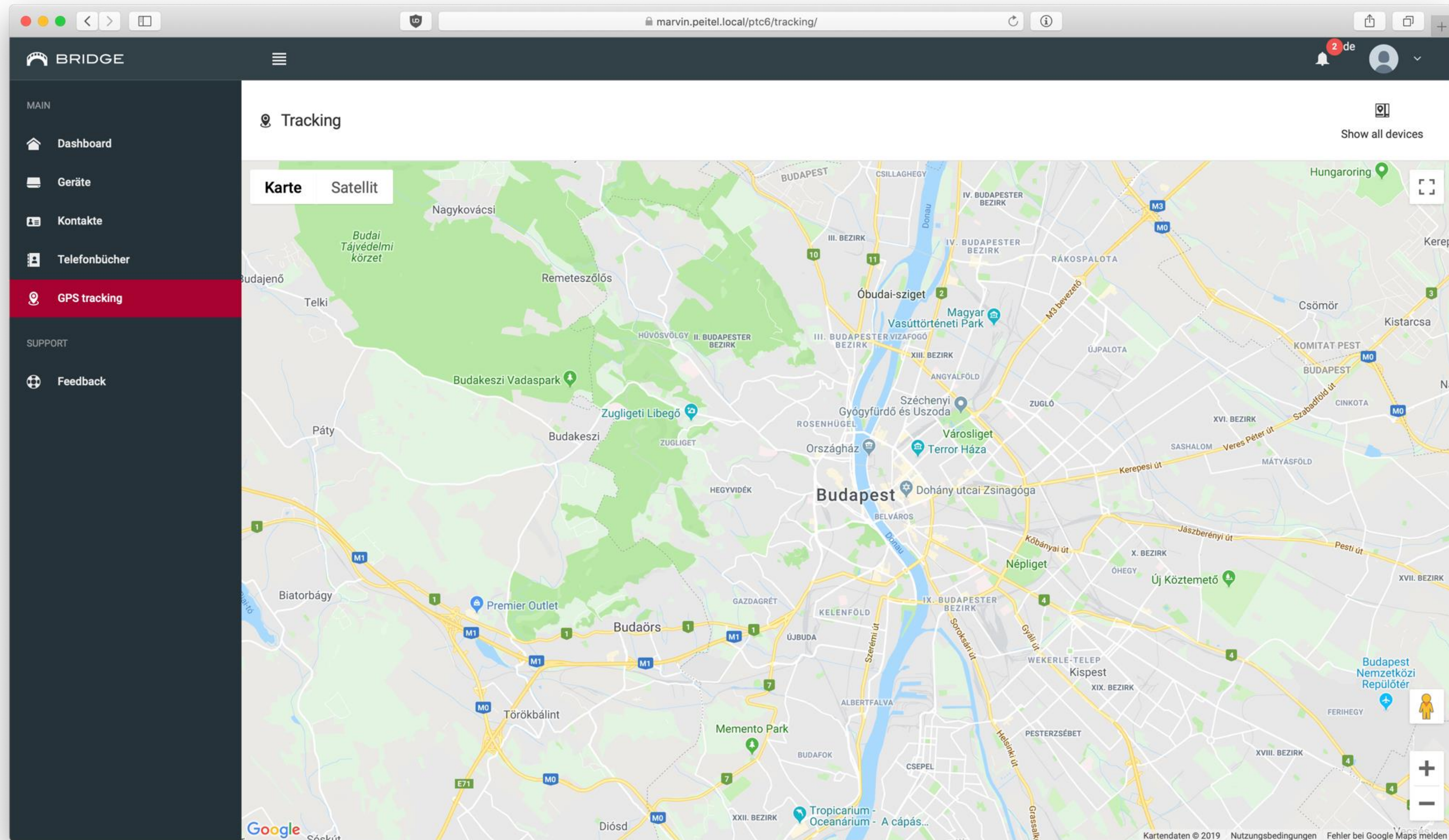
## BRIDGE



## BRIDGE – the New Web Platform

- Remote management of device settings and the phonebook
- Accessible via web browser; also possible via mobile devices (smartphone)
- Complete free of charge
- Supports PTCarPhone devices of the 5<sup>th</sup> and 6<sup>th</sup> generation
- Early access with Early Access Program → <https://bridge.peitel.de/en>

# BRIDGE – GPS Tracking

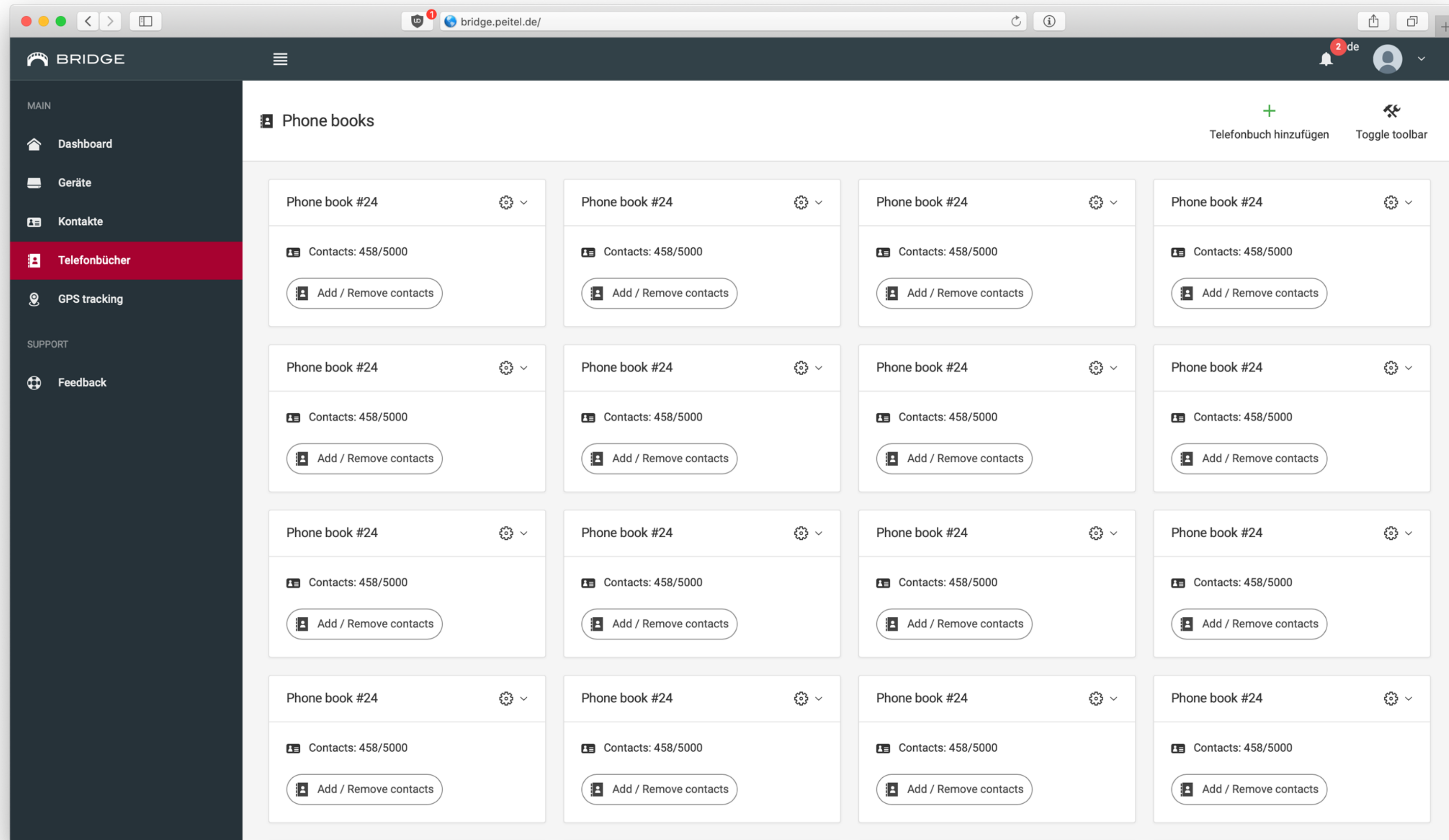


# BRIDGE – Device Management

The screenshot displays the BRIDGE Device Management web interface. The browser address bar shows 'bridge.peitel.de/'. The interface includes a dark sidebar with navigation options: MAIN (Dashboard, Geräte, Kontakte, Telefonbücher, GPS tracking) and SUPPORT (Feedback). The main content area is titled 'Devices' and features a grid of 16 device cards. Each card displays a device ID, a 'Pending' status, and details such as 'Contacts: 458/5000', 'Software: PTCarPhone 5 V.5.02.16', and 'Last update:'. Each card also has three circular icons at the bottom representing different management actions.

ID	Status	Contacts	Software	Last update
123456789012345	Pending	458/5000	PTCarPhone 5 V.5.02.16	
351234567890123	Pending	458/5000		
351622070215666	Pending	458/5000	PTCarPhone 5 V.5.02.19	30.11.2018 16:58
351622070215674	Pending	458/5000	PTCarPhone 5 V.5.02.15	24.07.2017 14:36
351622070215724	Pending	458/5000	PTCarPhone 5 V.5.02.15	14.08.2017 11:30
351622070215898	Pending	458/5000	PTCarPhone 5 V.5.02.18	15.06.2018 08:44
351622070216151	Pending	458/5000	PTCarPhone 5 V.5.02.17a	18.10.2017 14:02
351626100004339	Pending	458/5000	Platform 6 V.6.00.01	
351626100004388	Pending	458/5000	PTCarPhone 6 V.6.00.01	22.03.2019 14:33
351626100004529	Pending	458/5000	PTCarPhone 6 V.6.00.01	
351626100004693	Pending	458/5000	Platform 6 V.6.00.01	
351626100004792	Pending	458/5000	Platform 6 V.6.00.1076	
351626102013049	Pending			
351626102018659	Pending			
351626102018766	Pending			
351626102018790	Pending			

# BRIDGE – Phonebook and Contacts



# Second Handset and Intercom



## Opens Up new Possibilities for Vehicles with Separate Cabins

- Call forwarding from one handset to another
- Intercom function - interference-free communication between the driver's cab and the treatment room; hands-free calling for drivers
- Also ideal for motorhomes

Driver's cab: Hands-free calling while driving

Living space: Telephony via handset in the living area



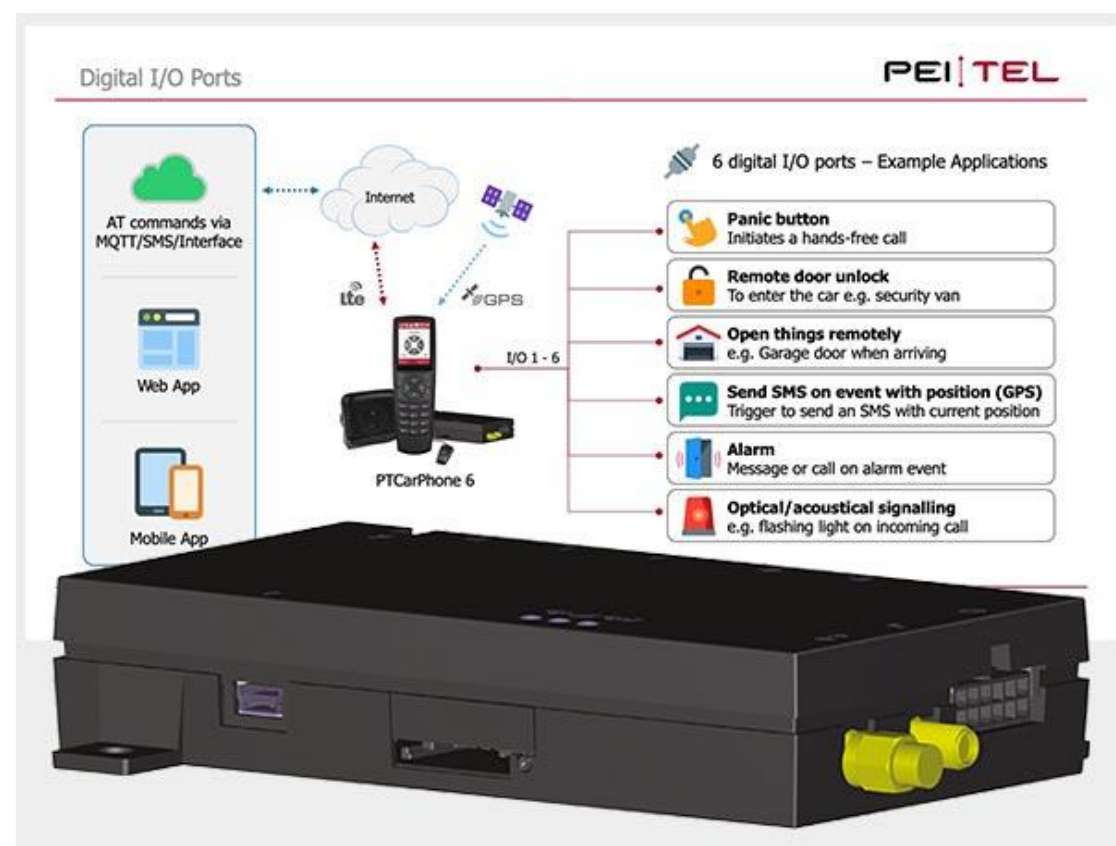


# Accessories and I/O Ports



## Extensive Range of Accessories

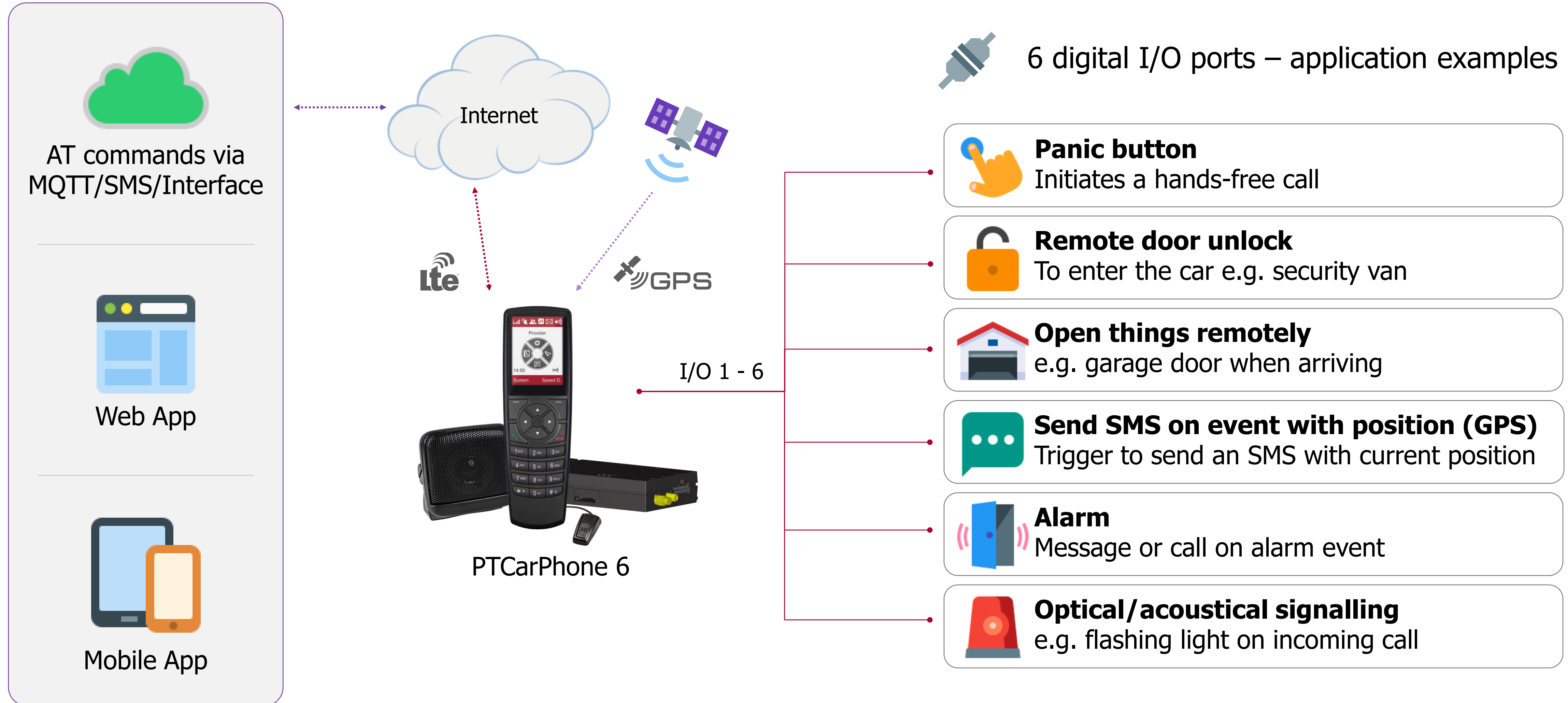
- Extension cords, speakers, hands-free microphones and gooseneck microphones, PTT button, etc.
- Control unit BE59 - fixed control panel; Phone calls only in hands-free mode
- Headset Unit (HSU) - headset adapter cable and headset with microphone mute switch



## I/O Ports – Digital Inputs and Outputs

- Countless options for controlling, signalling and controlling external devices
- Example: Panic or emergency button  
When pressed, an SMS is unnoticeably sent to a previously defined number and a call is established
- Realization of PTT functionality (push-to-talk) in group and conference calls
- Remote control and adjustment via BRIDGE (<https://bridge.peitel.de/en>) possible

# I/O Ports – Example Use Cases



# Integrated Solution – PTVoiceBox 4G



## Fully Integrated Solution - PTVoiceBox 4G

- Stand-alone communication system without handset - PTVoiceBox 4G
- For integration into new and existing systems
- For interference-free voice and data transmission on LTE basis
- Controlled by commands via USB, RS-232, SMS or MQTT



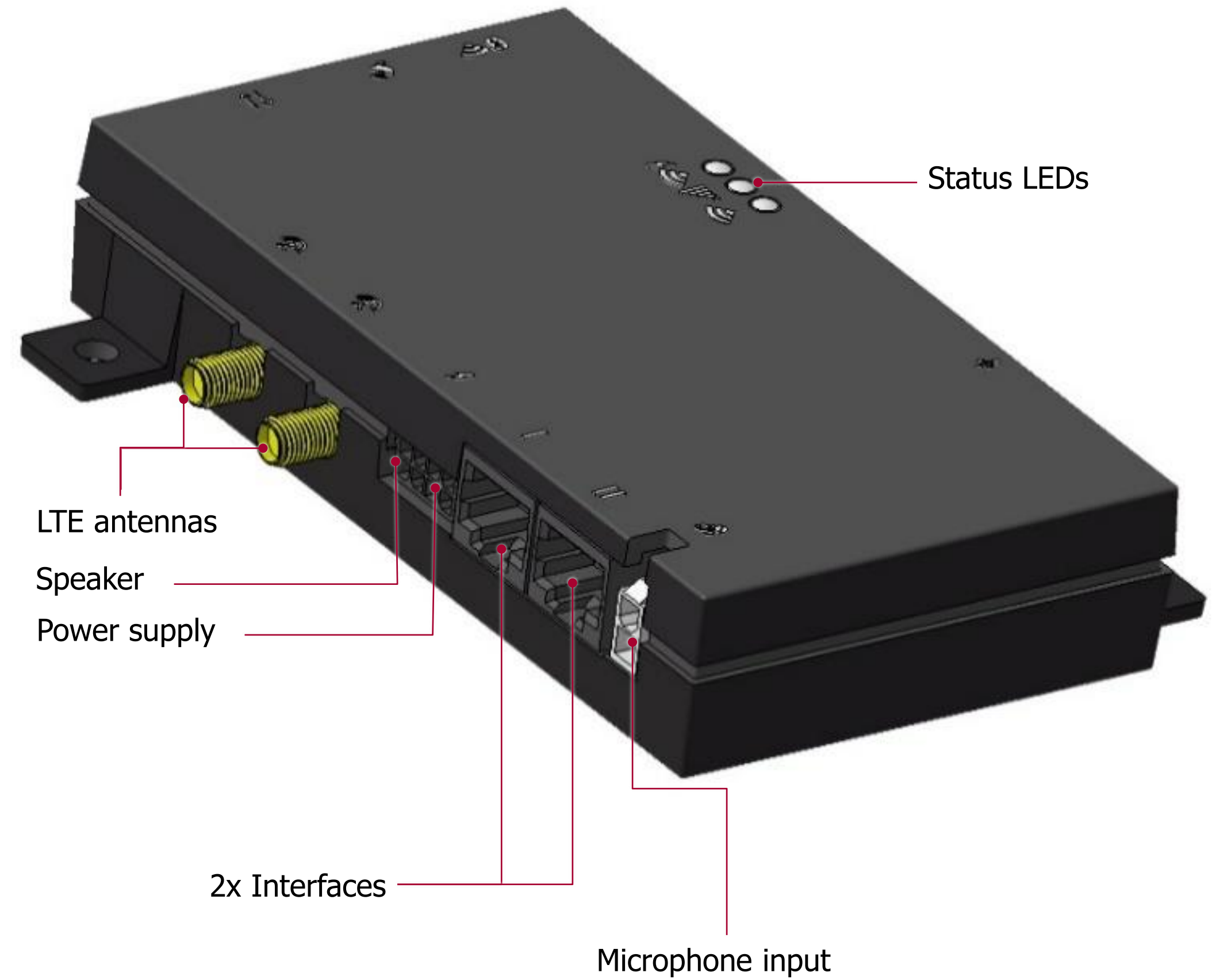
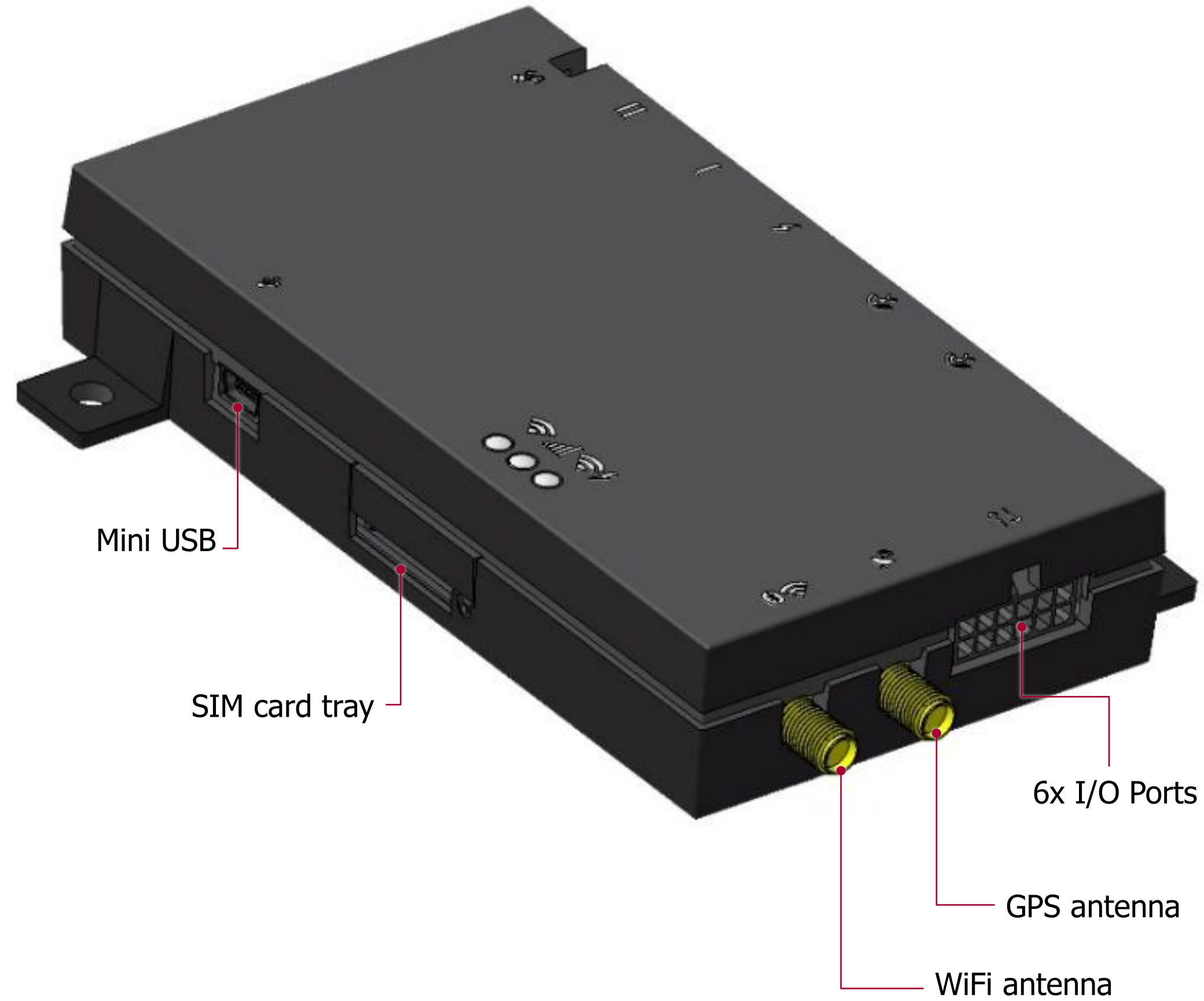
## Model for North America and Government Version

- Model for North America at product launch
- Special model for authorities
  - Perfect for use in government vehicles
  - Special functions integrated

# PTCarPhone 6 Models

PTCarPhone 6	Lieferumfang	Scope of supply
<p><b>PTCarPhone 6 EU</b></p> <p>Artikelnummer / Item number: <b>6609-006-100-51</b></p> 	<ul style="list-style-type: none"> <li>• LTE-Elektronikbox mit GPS + WiFi (Europa)</li> <li>• Handapparat mit Auflage</li> <li>• Lautsprecher (8 Ohm)</li> <li>• Freisprechmikrofon</li> <li>• Verlängerungskabel für Handapparat (2,5 m)</li> <li>• Anschlusskabelsatz</li> <li>• Kurz- und Installationsanleitung (mehrsprachig)</li> </ul>	<ul style="list-style-type: none"> <li>• <i>LTE electronics box with GPS + WiFi (Europe)</i></li> <li>• <i>Handset with cradle</i></li> <li>• <i>Speaker (8 Ohms)</i></li> <li>• <i>Hands-free microphone</i></li> <li>• <i>2.5 m extension cord for the handset</i></li> <li>• <i>Cable set</i></li> <li>• <i>Quick reference and installation instruc. (multilingual)</i></li> </ul>
<p><b>PTCarPhone 6 NA</b></p> <p>Artikelnummer / Item number: <b>6609-006-101-51</b></p> 	<ul style="list-style-type: none"> <li>• LTE-Elektronikbox mit GPS + WiFi (Nordamerika)</li> <li>• Handapparat mit Auflage</li> <li>• Lautsprecher (8 Ohm)</li> <li>• Freisprechmikrofon</li> <li>• Verlängerungskabel für Handapparat (2,5 m)</li> <li>• Anschlusskabelsatz</li> <li>• Kurz- und Installationsanleitung (mehrsprachig)</li> </ul>	<ul style="list-style-type: none"> <li>• <i>LTE electronics box with GPS + WiFi (North America)</i></li> <li>• <i>Handset with cradle</i></li> <li>• <i>Speaker (8 Ohms)</i></li> <li>• <i>Hands-free microphone</i></li> <li>• <i>2.5 m extension cord for the handset</i></li> <li>• <i>Cable set</i></li> <li>• <i>Quick reference and installation instruc. (multilingual)</i></li> </ul>

# PTCarPhone 6 – Interface Connections



# PTCarPhone 6 – Specifications

General	
Dimensions (w/ retaining tabs)	approx. 140 x 98 x 26 mm (L x W x H)
Weight	approx. 165 g
Operating voltage	10 V to 32 V
Power consumption	Off: < 0,07 W; Idle: Approx. 1.5 W to 3 W (depending on the connected accessories)
Current consumption	max. 2 A (in hands-free mode)
Transmission power	max. 2 W at 850/900 MHz; max. 1 W at 1800/1900 MHz
SIM card holder	Mini SIM card (2FF)
Supported networks	LTE, UMTS, GSM
Wireless interfaces	WiFi
Storage temperature	-30° C to +80° C
Operating temperature	-20° C to +70° C

Connections	
Antennas	4x SMA (antennas not included) / LTE, WLAN & GPS
Frequency bands	Europe: LTE B1(2100), B3(1800), B7(2600), B8(900), B20(800), B28A(700) / UMTS B1(2100), B3(1800), B8(900) / GSM B3(1800), B8(900)  NA: LTE B12(700), B14(70), B4(1700), B2(1900), B5(850), B13(700), B66(1700/2100), B71(600) / UMTS B2(1900), B4(1700), B5(850)
Data transfer	Mini USB connection
Digital I/Os	Connection socket for I/O cable kit, max. current carrying capacity: 150 mA per connection; dielectric strength: 32 V
Microphone	Plug: Molex 5557; sensitivity: 700 mV/Pa (-3 dBV/Pa ± 3 dB) at 8 V/680 Ω
Speaker	Plug: 2 pole Molex; connection at power cable
Power supply	Power cable (permanent plus, ground, ignition)
Interfaces	RS232 with V24 level, USB 2.0

# PEI | TEL



Malux Finland Oy  
Työpajatie 13a  
FI-06150, Porvoo  
(019) 574 5700  
<https://www.malux.fi/>