

LaneLED INOX42

Installation instructions



VERSION	MODIFICATIONS
1.0	First edition
1.1	Supplement in chapter 5.1
1.2	Supplement in chapter 4.1
1.3	Supplement in chapter 3.1, 4.2
1.4	Hint in chapter 4.2

Table of contents

1	General information	3
1.1	Marking concept for hazards and hints	3
1.2	Responsibilities of the operator	3
2	Introduction.....	4
2.1	Installation conditions LaneLED	4
3	Required tools	5
3.1	Consumables	6
4	Installation LaneLED INOX42	7
4.1	In general	7
4.2	Mounting	7
5	Installation of LaneLED light bars.....	8
5.1	Mounting the adapter to the LED carrier profile	8
5.2	Fitting the system cable.....	8
5.3	Supply line connection	8
5.4	Assembly of LED light bar: variant 1	9
5.4.1	Current collector connection	9
5.4.2	LED light bar connection	10
5.5	Assembly of LED light bar: variant 2	10
5.5.1	Current collector connection	10
5.5.2	LED light bar connection.....	10
5.6	Diffusor mounting	11
6	Detailed installation information	12
6.1	Press current collector onto the system cable with special crimping pliers	12
6.2	Finishing the system cable ends	13
6.3	Connecting/repairing the system cable	14
6.4	Isolation of system cables	16
7	Service.....	17
7.1	Service addresses.....	17
7.2	Imprint	17

1 General information

1.1 Marking concept for hazards and hints

 **Hazard**

Hazardous situation which will cause serious injury or even death if it is not prevented.

 **Caution**

Hazardous situation which could cause slight to moderate injury if it is not prevented.

 **Hint**

Indicates information which does not concern personal injury, e.g. hints in respect of material damage.

 **Protective measures**

Increase safety by applying a protective measure.

1.2 Responsibilities of the operator

- Make sure that this document is always kept in a safe place in a legible form together with the product.
- Read these instructions carefully before first start-up of the product.
- This product has been developed and produced exclusively for the use indicated in these documents. Every other use, which is not mentioned explicitly, could affect the intactness of the product and/or could constitute a source of danger.
- The manufacturer rejects any liability for damage which has been caused by incorrect or non-intended use of the product.
- In countries, which do not belong to the European Community, the national legal reference regulations as well as the standards and regulations applicable in these countries have to be observed for warranty of a corresponding safety level.
- The installation has to be carried out according to the applicable regulations.
- The manufacturer assumes no liability for inexpert execution of installation as well as deformations which may occur during operation.
- The electric power supply has to be switched off before executing any action on the installation.
- Exclusively original parts of the manufacturer shall be used for maintenance. Maintenance work may be carried out by qualified staff only.
- All procedures which are not explicitly mentioned by the manufacturer in the instructions are not permitted.
- The packing material must not be stored within the reach of children as it could be a potential source of danger.

Created 22.03.2017 roen	Modified 17.07.2020 roen	Object-ID 1181162
--------------------------------------	---------------------------------------	-----------------------------

2 Introduction

To ensure proper installation, the following steps and notes must be complied with under all circumstances. Only this way can it be ensured that the product will work to complete satisfaction.

⚠ Hazard

Read all instructions before starting installation. Our sales department will be happy to answer any questions you may have.

2.1 Installation conditions LaneLED

- To comply with the necessary operating voltage, the number of connected LaneLED light bars must be adjusted to the line length.
- The maximum line length for the number of LaneLED light bars required must be calculated for the specific installation.
- LaneLED light bars must be calculated specifically for the plant.
- Installation only in dry weather or with the installation site covered.
- For correct installation, the protective measures and
- For mounting of the GFK handrail, observe the provisions and instructions of the manufacturer and the local object provisions (specifications for dowels and threaded rods, supporting distance, SIA standards, etc...). Observe a standardcompliant and technically properly executed installation.



Created 22.03.2017 roen	Modified 17.07.2020 roen	Object-ID 1181162
--------------------------------------	---------------------------------------	-----------------------------

3 Required tools

Crimping tool mechanical Item no. 860457,
or electric Item no. 860456



Pliers to cut off cables



Light barking pliers for system cables 2x2.5 mm2



Hot-air gun



Circular saw



i Hint

Ensure the correct saw blade is used (V2A, V4A)
Corrosion can result if the wrong blade is used.

Power supply 24VDC (20-36VDC)



Large utility knife



Recommended:

- Device for unrolling cables
- Cable lug crimping pliers for press connector
- Screwdriver size 5 (to dismount LaneLED after wrong connection if necessary)
- Head lamp, measuring tape, material/tool cart, etc.



3.1 Consumables

Heat shrink tube with glue (6 mm/2 mm):
If appl. insulation tape 2 M Scotch no. 23, black
If appl. crimp connector 1.5-2.5 hot-shrinking Raychem, blue
Solder connector 1.5-2.5 heat-shrinkable NSPA, transparent
Lens head screw A2 - M5x6mm I-6K, ISO7380/FN202

Item no. 010300
Item no. 152743
Item no. 019875
Item no. 172745
Item no. 165276

Created	Modified	Object-ID
22.03.2017 roen	17.07.2020 roen	1181162

4 Installation LaneLED INOX42

4.1 In general

i Hint

Examine the arrangement of the materials before assembly. Are all parts required for assembly available? Do certain parts have to be adjusted on-site?

▲ Caution

This product is a stainless steel handrail system. It is recommended that cutting the hand rail to size and installation is done by qualified personnel.

4.2 Mounting

- Mount hand rail as shown in the image.

i Hint

The mechanical V4A parts must either be glued or welded.



i Hint

For the fastening of the tube to the bracket, oval head screws A2 (M5x6mm / Item no. 165276) should be used.



- Carry out adjustments to the hand rail, such as cutting or welding, directly on-site.



5 Installation of LaneLED light bars

5.1 Mounting the adapter to the LED carrier profile

- Mount the adapter in the groove as shown in the drawing

i Hint

In every case, an adapter should be installed at each end of a LaneLED light bar. The distance between two adapters on one light bar should be a maximum of 30 cm.

For the installation of the adapter, an M5 threaded hole has to be drilled

- Drill D=4.2
- Thread cutter M5



5.2 Fitting the system cable

- Loop the system cable through the handrail supports



5.3 Supply line connection

- Connect the connection cable and system cable with the press or solder connector



5.4 Assembly of LED light bar: variant 1

- Place the looped connection line into the plastic profile



- Loop the LED light bar through the handrail supports, introduce into the groove and click into the adapters

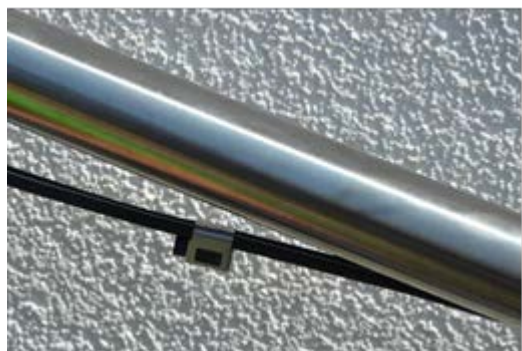
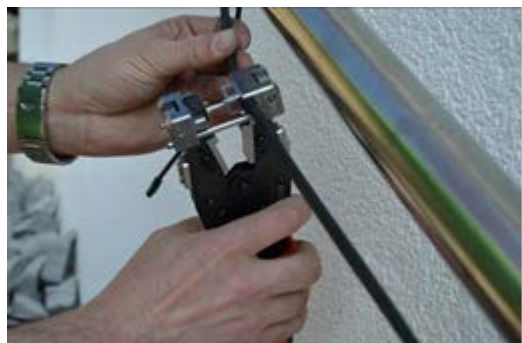


5.4.1 Current collector connection

- The connection can be placed behind or next to the LED light bar

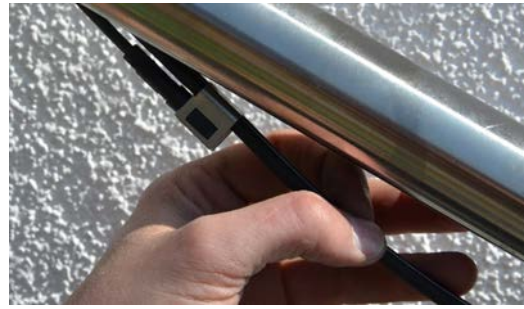
i Hint

The current collector may not be mounted at the height of an LED click-in adapter or holding adapter.



5.4.2 LED light bar connection

- Insert current collector
- Carry out a functional check to make sure that the LED light bar illuminates
- Click light bar into adapter



5.5 Assembly of LED light bar: variant 2

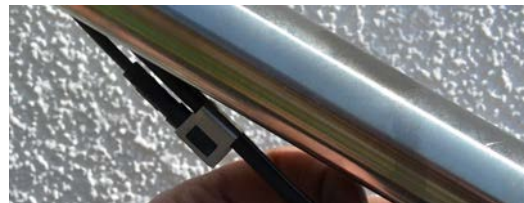
5.5.1 Current collector connection

- The connection can be placed behind or next to the LED light bar



5.5.2 LED light bar connection

- Insert current collector
- Carry out a functional check to make sure that the LED light bar illuminates
- Click light bar into adapter



5.6 Diffusor mounting

- Determine the length of the diffusor



- Cut the diffusor



- Clean the diffusor



- Mount the diffusor



6 Detailed installation information

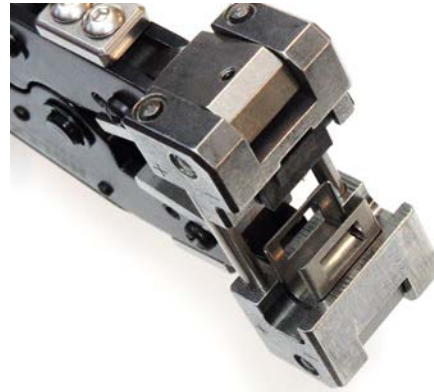
6.1 Press current collector onto the system cable with special crimping pliers

i Hint

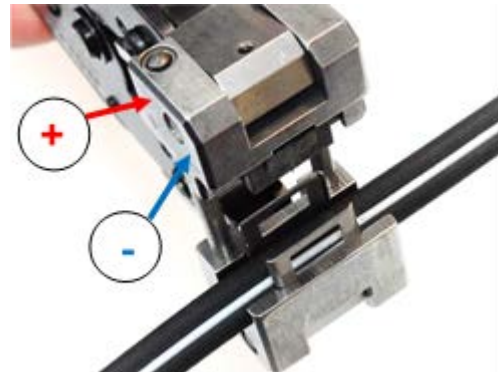
The current collector must be at a distance of approx. 20 cm from the end of the LaneLED light bars. Install the contact element on the connector side towards the middle of the LaneLED light bars.

Observe the following steps:

- Insert metal bracket into lower plier jaw, with the contact element in the upper plier jaw.



- Insert the system cable into the metal bracket and turn it until it lies flat in the bracket. The negative pole (white marking) must be aligned toward the front of the pliers and correspond with the + and - imprints on the sides of the pliers. Operate the crimping pliers.



- Insert the LaneLED connection cable (with the white marking aligned upwards) into the current collector until it stops. If the system cable was previously connected to a 24 VDC supply, the LaneLED light bars must now illuminate.



6.2 Finishing the system cable ends

- The cable end must be isolated against moisture

⚠ Hazard

The cable end must be cut cleanly, no loose wires
Do not use common adhesive tape



- Open up the strands of the system cable along a length of 5 cm.

💡 Hint

Use a large blade for this Cut on a hard, level surface

⚠ Hazard

Do not damage the strand isolation when cutting



- Isolate every strand separately Cut 2x 5cm shrink tube to size

Use watertight heat shrink tube with inner adhesive shrink tube (6mm / 2mm): Item no. 010300



- Shrink with hot-air gun (shrink temperature 110°C)



- Compress shrink tube ends in the hot condition

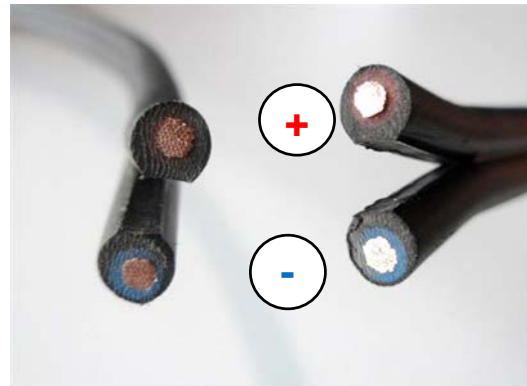
⚠ Hazard

Do not burn your fingers!



6.3 Connecting/repairing the system cable

- Connect strands of the same polarity to each other



- Open up the strands of the two system cables along a length of 5 cm

📌 Hint

Use a large blade for this
Cut on a hard, level surface

⚠ Hazard

Do not insure the strand isolation when cutting





- Strip strands

⚠ Hazard

No loose wires



- Crimp press connector
- Use watertight press connector with inner adhesive
- Press connector 2,5 mm² hot-shrinking: Item no. 019875



- Press connector 2. Crimp side



- Shrink with hot-air gun until the insulation sleeve shrinks (shrink temperature 110 °C)



6.4 Isolation of system cables

- A current collector that is installed incorrectly or in the wrong location will leave 2 small holes in the system cable that must be isolated against moisture



- Isolation of the holes (current collector)



⚠ Hazard

Insulation tape: Item no. 152743
 Manufacturer's designation: 3 M Scotch table no. 23,
 black, (19 mm/19.4 m)



7 Service

7.1 Service addresses

GIFAS ELECTRIC GmbH Borsigstrasse 9 D-41469 Neuss	GIFAS-ELECTRIC S.r.l Via dei Filaracci 45 Piano del Quercione I-55054 Massarosa (LU)	GIFAS ELECTRIC GmbH Strass 2 A-5301 Eugendorf	GIFAS-ELECTRIC GmbH Dietrichstrasse 2 Postfach 275 CH-9424 Rheineck
☎ +49 2137 105-0 📠 +49 2137 105-230 🌐 www.gifas.de ✉ verkauf@gifas.de	☎ +39 58 497 82 11 📠 +39 58 493 99 24 🌐 www.gifas.it ✉ info@gifas.it	☎ +43 6225 7191-0 📠 +43 6225 7191-561 🌐 www.gifas.at ✉ verkauf@gifas.at	☎ +41 71 886 44 44 📠 +41 71 886 44 49 🌐 www.gifas.ch ✉ info@gifas.ch

7.2 Imprint

GIFAS-ELECTRIC GmbH
CH-9424 Rheineck
www.gifas.ch

Technical changes and errors reserved.

These installation instructions are the property of GIFAS-ELECTRIC GmbH and may not be copied, translated, transferred, duplicated or passed on to third parties without the previous written consent of GIFAS-ELECTRIC.