

## Ex-Repair and Maintenance Receptacle Distribution

1 40 A and 80 A distribution plastic version for zones 1 and 2

### Maintenance procedure

For maintenance, repair and upgrading work, appliances such as drills, welding transformers, hand grinders and such are needed but are not in accordance to the explosion-protection regulations.

To be able to use these appliances in the Zone 1 or Zone 2 explosion-protected areas a hot work permit has to be issued. For the duration of the repair or maintenance work, the environ-

ment has to be free of all explosive hazardous atmospheres.

The CEAG explosion-protected repair and maintenance receptacle distributions are in accordance to regulations that in parts require a stationary installation. With the interlocking and lockable switch the utilization of the repair and maintenance receptacle distributions is selectively possible after a hot work permit has been issued.

All sockets are equipped with high quality switches and RCDs and have separate MCB's.

Repair and maintenance sockets have a red signal lamp on the top side of the housing showing the actual state of connection.



### Features

- Industrial electrical devices can be used with a „hot work permit“
- Sockets with lamellar contacts for secure connection
- Lockable switch with all-pole switching and AC-3 motor switching capability
- High mechanical, chemical and thermal resistance
- Sockets can be locked separately

## Repair receptacle distributions 40 A and 80 A



80 A



40 A

1

### Technical data

Repair receptacle distributions	
Marking accd. to 2014/34/EU	⊕ II 2 G Ex ed IIC T6
EC-Type Examination Certificate	PTB 00 ATEX 1100 X
Permissible ambient temperature	-55 °C to +55 °C (40 A) / -36 °C to +55 °C (80 A) <sup>1)</sup>
Rated voltage	400 V
Rated current	40 A / 80 A
Frequency	50 - 60 Hz
Rated making / Rated breaking capacity AC-3 accd. EN 60947-3	40 A switch: $U_b$ 400 V / $I_b$ 40 A 80 A switch: $U_b$ 400 V / $I_b$ 80 A
Protection class	I
Degree of protection accd. to EN 60529	IP66
Enclosure material	glass-fibre reinforced polyester
Enclosure colour	black

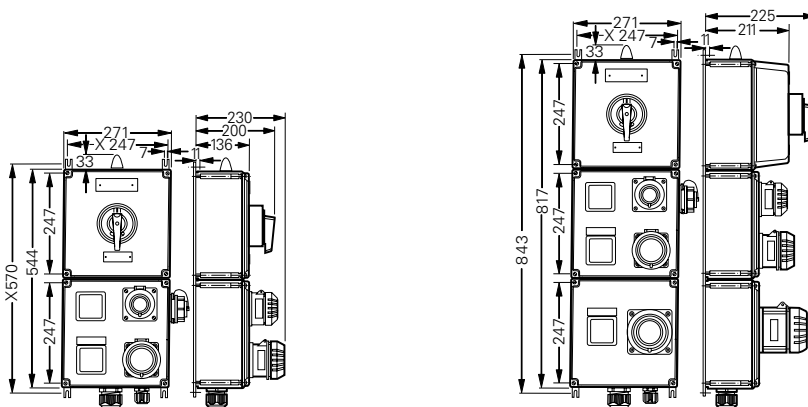
### Ordering details

Number of components	Circuit	Order No.
1 switch, 4-pole, 40 A, 1 RCD 40/0,03 A; 1 IEC 60309-socket, 16 A, 1 MCB, 3-pole, 16 A 1 IEC 60309-socket, 32 A, 1 MCB, 3-pole, 32 A 1 earthed socket 16 A, 1 MCB, 1-pole, 16 A 1 signal lamp 1 cable gland M40 cable gland 1 cable gland M25 cable gland Weight: 8.5 kg		GHG 981 0042 R0001
1 switch, 4-pole, 80 A, 1 RCD 80/0,03 A 1 IEC 60309-socket, 16 A, 1 MCB, 3-pole, 16 A 1 IEC 60309-socket, 32 A, 1 MCB, 3-pole, 32 A 1 IEC 60309-socket, 63 A, 1 MCB, 3-pole, 63 A 1 earthed socket 16 A, 1 MCB, 1-pole, 16 A 1 signal lamp 1 cable gland M50 cable gland 1 cable gland M25 cable gland Weight: 15 kg		GHG 981 0043 R0001

Other types on request / Customer specifications on request

<sup>1)</sup> extended temperature range on request

### Dimension drawing



Repair socket distributions 40 A

Repair socket distributions 80 A

X = fixing dimensions

Dimensions in mm