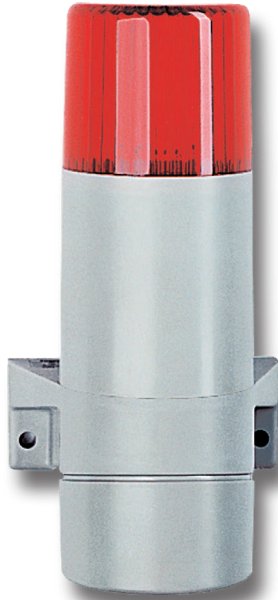


Strobe Light BLS

Optical signalling device for indoor and outdoor applications



Overview

The BLS Strobe Light is an optical signalling device for universal use for example as continuous, warning or alarm strobe light. The ribbed cap is available in 5 different colours and achieves an extremely wide light dispersion. The strobe light is available with a flash energy of 5 or 15 joule for continuous operation.

The plastic housing is made of impact-resistant thermoplastic and the cap consists of impact-resistant plexiglass. The cable is led into the housing through a self-sealing grommet M16 x 1.5. The arrangement of the fastening bar allows for a surface or flush-mounted wiring.

Features

- Compensation valve to prevent condensation water
- Flash energy 5 Joule, 15 Joule
- Flash frequency 60/min.
- Continuous operation

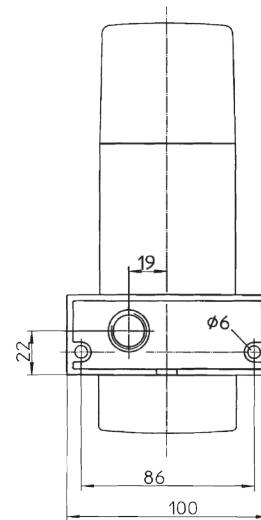
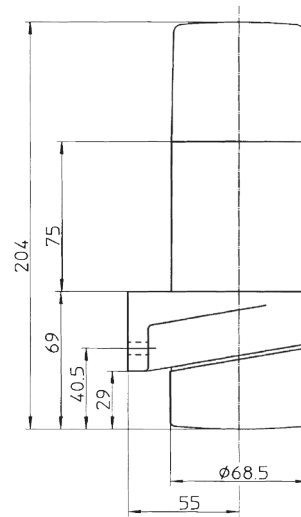


Powering Business Worldwide

Specifications

Housing	Thermoplastic (ABS), impact-resistant
Colour	Light grey
Cap	Polycarbonat
Cap colour	Transparent, red, amber, green, blue
Ingress protection	IP 54 according to EN 60529
Protection class	II
Cable gland	1x self-sealing grommet M16 x 1.5
Connection terminals	Terminal capacity: 2,5 mm ² single-wire 1,5 mm ² fine-wire
Flash energy	BLK 30/40: 5 joule BLK 50/60: 15 joule
Flash frequency	60/min
Operating conditions	Indoors or outdoors under protective roof
Operating position	Any (preferably with cable glands facing downwards)
Operating mode	Continuous operation acc. to IEC34, DIN EN 60034-1 VDE 0530 Niveau S1
Temperature range	
Operation	-30 °C to +50 °C
Storage	-30 °C to +70 °C
Weight	Approx. 0.7 kg

General arrangement drawing (all dimensions in mm)



Ordering data

* The full article number is made up by appending the colour code to the article numbers given below.

Type	Designation	Input voltage	Tolerance	Current consumption	Art. No.*
BLS 30	Strobe Light	24 VAC, 50-60 Hz	15-32 V	0.50 A	FHF 224 151 ..
BLS 30	Strobe Light	230 VAC, 50-60 Hz	-10/+6 %	0.09 A	FHF 224 152 ..
BLS 40	Strobe Light	12 VDC	9-16 V	0.80 A	FHF 224 153 ..
BLS 40	Strobe Light	24 VDC	15-32 V	0.35 A	FHF 224 154 ..
BLS 50	Strobe Light	230 VAC, 50-60 Hz	-10/+6 %	0.13 A	FHF 224 162 ..
BLS 60	Strobe Light	24 VDC	16-32 V	0.54 A	FHF 224 164 ..

transparent	01
red	02
amber	03
green	04
blue	05