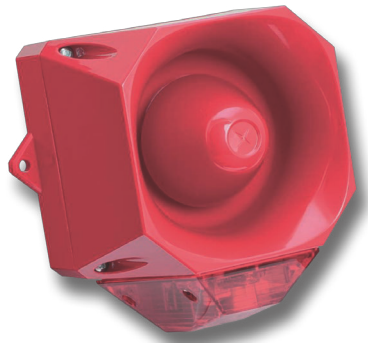


Sounder-Strobe- Combination AXL05

High-volume signalling device with 32 different signal tones and 2.5 Joule strobe light



Übersicht

The sounder-strobe-combination consists of a compact high-volume signalling device with good directivity and a 2.5 Joule strobe light.

The optical and acoustic signals can be controlled separately. The ingress protection of IP 66 allows for indoor and outdoor applications.

The housing is made of ABS/polycarbonat. The sounder comprises 32 different signal tones, which makes it suitable for universal use.

The signal tone is selected with a DIP switch. All available versions are suited to a 2-stage-alarm.

The integrated strobe light is controlled via a separate connection terminal.

Features

- AC and DC models
- High sound level up to 112 dB(A)
- Low power consumption
- Choice of 32 different signal tones
- Strobe light 2.5 Joule
- Robust and reliable

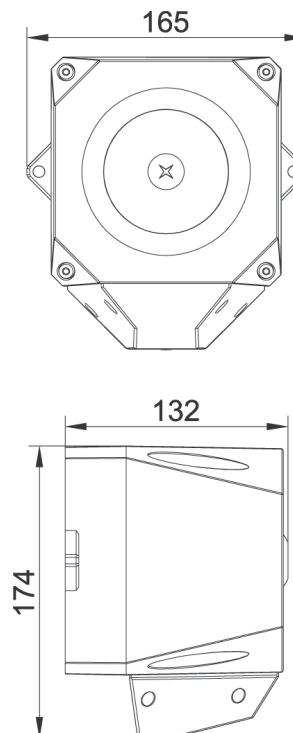


Powering Business Worldwide

Specification

Housing	ABS
Colour	Red
Dome	Polycarbonat
Dome colour	Transparent, red, amber, blue
Flash energy	2,5 joule
Volume	Approx. 112 dB(A)
Signals	32
Ingress protection	IP 66 according to IEC 60529
Cable glands	Not included in scope of delivery
Connection terminals	Terminal capacity: 2.5 mm ² single-wire 1.5 mm ² fine-wire
Operating conditions	Indoors and outdoors
Operating position	Preferably horizontal with cable glands facing downward
Operating mode	Continuous operation
Temperature range	-25 °C to +70 °C
Weight	Approx. 0.8 kg

General arrangement drawing (all dimensions in mm)



Ordering data

* The full article number is made up by appending the colour code to the article numbers given below.

Type	Designation	Supply voltage	Sound level	Art. No.*	230 V	
					24 V	115 V
AXL05	Sounder-Strobe-Combination	230 VAC	approx. 112 dB(A)	FHF 225 107 ...	transparent	01 010
AXL05	Sounder-Strobe-Combination	115 VAC	approx. 112 dB(A)	FHF 225 106 ...	red	02 020
AXL05	Sounder-Strobe-Combination	9-60 VDC	approx. 110 dB(A)	FHF 225 113 ...	amber	03 030
					blue	05 050